

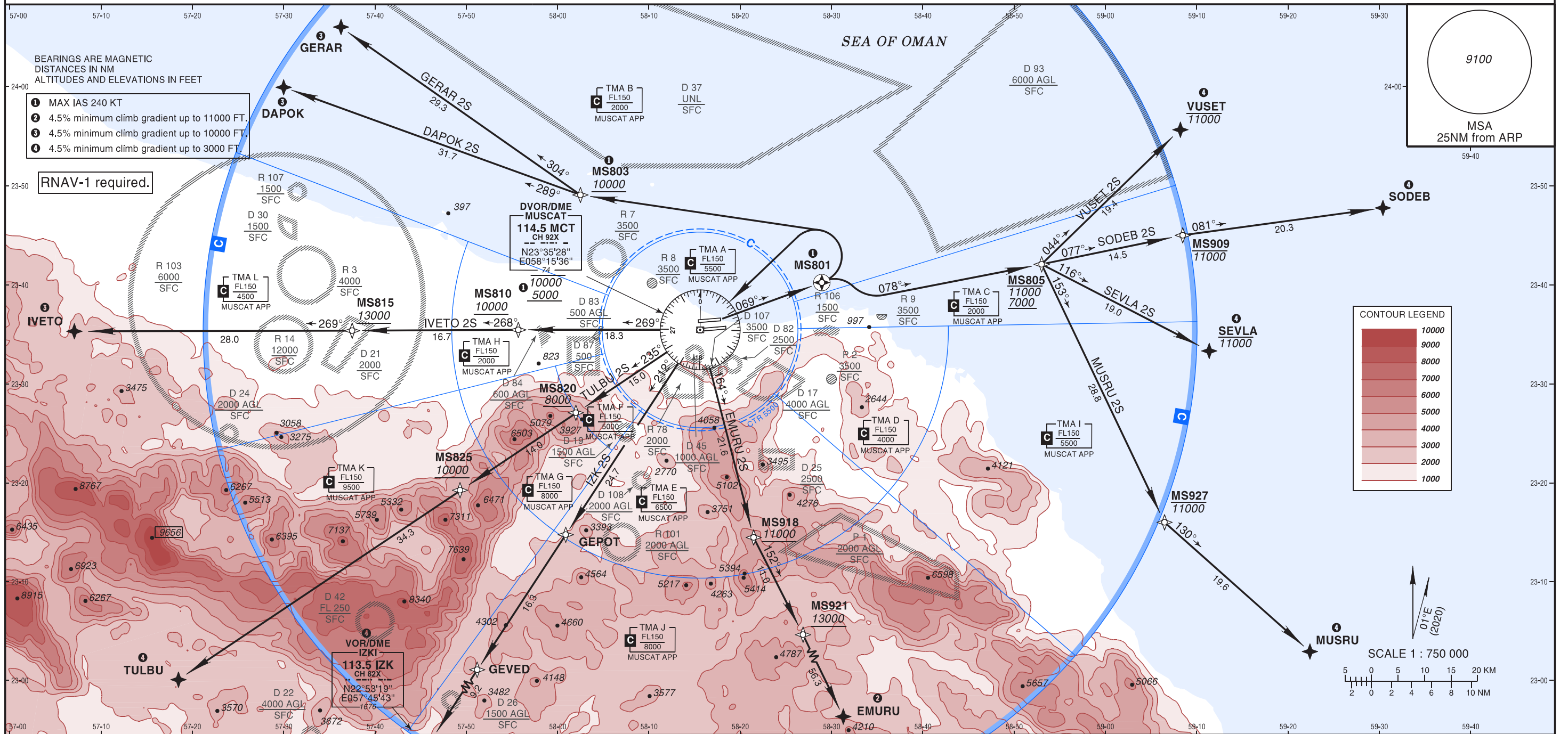
STANDARD DEPARTURE
CHART INSTRUMENT
(SID) - ICAO

AD ELEV 49 FT
Trans Alt 13000
Trans Level FL150

ATIS 126.800
TWR 118.825
GND 121.800

MUSCAT/Muscat Intl
OMAN
RWY 08L

VUSET 2S, SODEB 2S, SEVLA 2S, MUSRU 2S, EMURU 2S, IZK 2S, TULBU 2S, IVETO 2S, DAPOK 2S, GERAR 2S RNAV (GNSS) DEPARTURE



INITIAL CLIMB

MS801	Climb to MS801 on course 069°, then		
SID	ROUTING	SID	ROUTING
VUSET 2S	turn RIGHT on course 078° to MS805 between 7000 and 11000, then turn LEFT to VUSET at or below 11000.	IZK 2S	turn LEFT direct to MCT DVOR/DME between 5000 and 10000, then to GEPOT, then to GEVED and to IZK VOR/DME.
SODEB 2S	turn RIGHT on course 078° to MS805 between 7000 and 11000, then to MS909 at or below 11000, then to SODEB.	TULBU 2S	turn LEFT direct to MCT DVOR/DME between 5000 and 10000, then to MS820 at or above 8000, then to MS825 at or above 10000 and to TULBU.
SEVLA 2S	turn RIGHT on course 078° to MS805 between 7000 and 11000, then turn RIGHT to SEVLA at or below 11000.	IVETO 2S	turn LEFT direct to MCT DVOR/DME between 5000 and 10000, then to MS810 at or above 10000, then to MS815 at or above 13000 and to IVETO.
MUSRU 2S	turn RIGHT on course 078° to MS805 between 7000 and 11000, then turn RIGHT to MS927 at or below 11000, then turn LEFT to MUSRU.	DAPOK 2S	turn LEFT direct to MS803 at or above 10000, then to DAPOK.
EMURU 2S	turn LEFT direct to MCT DVOR/DME between 5000 and 10000, then to MS918 at or above 11000, then to MS921 at or above 13000 and to EMURU.	GERAR 2S	turn LEFT direct to MS803 at or above 10000, then to GERAR.

Route Description: RNAV (GNSS) DEPARTURE RWY 08L

Path descriptor	Fix identifier	Flyover	Course Magnetic (True)	Turn direction	Altitude	Speed limit	Magnetic variation	Distance	Navigation performance
INITIAL CLIMB									
CF	MS801	Y	069° (070.0°)			240 KT	1.4°E		RNAV 1
VUSET 2S DEPARTURE									
	MS801	Y				240 KT	1.4°E		RNAV 1
CF	MS805		078° (079.0°)	R	-11000 +7000		1.4°E		RNAV 1
TF	VUSET		044° (045.8°)	L	-11000		1.4°E	19.4	RNAV 1
SODEB 2S DEPARTURE									
	MS801	Y				240 KT	1.4°E		RNAV 1
CF	MS805		078° (079.0°)	R	-11000 +7000		1.4°E		RNAV 1
TF	MS909		077° (078.3°)		-11000		1.4°E	14.5	RNAV 1
TF	SODEB		081° (082.1°)				1.4°E	20.3	RNAV 1
SEVLA 2S DEPARTURE									
	MS801	Y				240 KT	1.4°E		RNAV 1
CF	MS805		078° (079.0°)	R	-11000 +7000		1.4°E		RNAV 1
TF	SEVLA		116° (117.3°)	R	-11000		1.4°E	19.0	RNAV 1
MUSRU 2S DEPARTURE									
	MS801	Y				240 KT	1.4°E		RNAV 1
CF	MS805		078° (079.0°)	R	-11000 +7000		1.4°E		RNAV 1
TF	MS927		153° (154.5°)	R	-11000		1.4°E	28.8	RNAV 1
TF	MUSRU		130° (131.6°)	L			1.4°E	19.6	RNAV 1
EMURU 2S DEPARTURE									
	MS801	Y				240 KT	1.4°E		RNAV 1
DF	MCT			L	-10000 +5000	240 KT	1.4°E		RNAV 1
TF	MS918		164° (165.5°)	L	+11000		1.4°E	21.6	RNAV 1
TF	MS921		152° (153.1°)	L	+13000		1.4°E	11.0	RNAV 1
TF	EMURU		152° (153.8°)				1.4°E	56.3	RNAV 1
IZK 2S DEPARTURE									
	MS801	Y				240 KT	1.4°E		RNAV 1
DF	MCT			L	-10000 +5000	240 KT	1.4°E		RNAV 1
TF	GEPOT		212° (213.3°)				1.4°E	24.7	RNAV 1
TF	GEVED		212° (213.3°)				1.4°E	16.3	RNAV 1
TF	IZK		212° (213.1°)				1.4°E	9.2	RNAV 1
TULBU 2S DEPARTURE									
	MS801	Y				240 KT	1.4°E		RNAV 1
DF	MCT			L	-10000 +5000	240 KT	1.4°E		RNAV 1
TF	MS820		235° (236.3°)		+8000		1.4°E	15.0	RNAV 1
TF	MS825		235° (236.3°)		+10000		1.4°E	14.0	RNAV 1
TF	TULBU		235° (236.2°)				1.4°E	34.3	RNAV 1

Route Description: RNAV (GNSS) DEPARTURE RWY 08L

Path descriptor	Fix identifier	Flyover	Course Magnetic (True)	Turn direction	Altitude	Speed limit	Magnetic variation	Distance	Navigation performance
INITIAL CLIMB									
CF	MS801	Y	069° (070.0°)			240 KT	1.4°E		RNAV 1
IVETO 2S DEPARTURE									
	MS801	Y				240 KT	1.4°E		RNAV 1
DF	MCT			L	-10000 +5000	240 KT	1.4°E		RNAV 1
TF	MS810		269° (270.1°)	R	+10000		1.4°E	18.3	RNAV 1
TF	MS815		268° (269.8°)		+13000		1.4°E	16.7	RNAV 1
TF	IVETO		269° (270.0°)				1.4°E	28.0	RNAV 1
DAPOK 2S DEPARTURE									
	MS801	Y				240 KT	1.4°E		RNAV 1
DF	MS803			L	+10000	240 KT	1.4°E		RNAV 1
TF	DAPOK		289° (290.1°)	R			1.4°E	31.7	RNAV 1
GERAR 2S DEPARTURE									
	MS801	Y				240 KT	1.4°E		RNAV 1
DF	MS803			L	+10000	240 KT	1.4°E		RNAV 1
TF	GERAR		304° (305.1°)	R			1.4°E	29.3	RNAV 1

Aeronautical Data Tabulation: RNAV (GNSS) DEPARTURE RWY 08L

Waypoint / Fix	Latitude	Longitude	Latitude (MIN)	Longitude (MIN)	Notes
MS801	N23°40'15.33"	E058°28'55.29"	N23°40.256'	E058°28.922'	
DAPOK	N23°59'56.00"	E057°29'59.00"	N23°59.933'	E057°29.983'	
EMURU	N22°13'57.00"	E058°53'38.00"	N22°13.950'	E058°53.633'	
GEPOT	N23°14'46.00"	E058°00'53.00"	N23°14.767'	E058°00.883'	
GERAR	N24°06'00.00"	E057°36'16.00"	N24°06.000'	E057°36.267'	
GEVED	N23°01'05.00"	E057°51'11.00"	N23°01.083'	E057°51.183'	
IVETO	N23°35'20.00"	E057°07'04.00"	N23°35.333'	E057°07.067'	
IZK VOR	N22°53'18.60"	E057°45'42.73"	N22°53.310'	E057°45.712'	
MCT VOR	N23°35'28.04"	E058°15'36.48"	N23°35.474'	E058°15.607'	
MS803	N23°49'05.35"	E058°02'29.79"	N23°49.089'	E058°02.497'	
MS805	N23°42'05.25"	E058°53'00.84"	N23°42.088'	E058°53.014'	
MS810	N23°35'28.82"	E057°55'41.36"	N23°35.480'	E057°55.689'	
MS815	N23°35'23.37"	E057°37'30.25"	N23°35.390'	E057°37.504'	
MS820	N23°27'05.99"	E058°01'59.57"	N23°27.100'	E058°01.993'	
MS825	N23°19'16.10"	E057°49'18.36"	N23°19.268'	E057°49.306'	
MS909	N23°45'01.39"	E059°08'28.04"	N23°45.023'	E059°08.467'	
MS918	N23°14'29.62"	E058°21'27.95"	N23°14.494'	E058°21.466'	
MS921	N23°04'38.60"	E058°26'52.42"	N23°04.643'	E058°26.874'	
MS927	N23°16'01.37"	E059°06'28.40"	N23°16.023'	E059°06.473'	
MUSRU	N23°02'56.00"	E059°22'23.00"	N23°02.933'	E059°22.383'	
SEVLA	N23°33'21.00"	E059°11'22.00"	N23°33.350'	E059°11.367'	
SODEB	N23°47'47.00"	E059°30'23.00"	N23°47.783'	E059°30.383'	
TULBU	N23°00'05.00"	E057°18'27.00"	N23°00.083'	E057°18.450'	
VUSET	N23°55'40.00"	E059°08'12.00"	N23°55.667'	E059°08.200'	